

# Joy Of The Lord

Words and Music by  
Rend Collective and Ed Cash

♩ = 100

## VERSE 1 & 2

G



1. Though the tears may fall, my song will rise, — my song will rise — to You. Though my  
(2.) dead of night, I'll lift my eyes, — I'll lift my eyes — to You. When the

3

C<sup>2</sup>



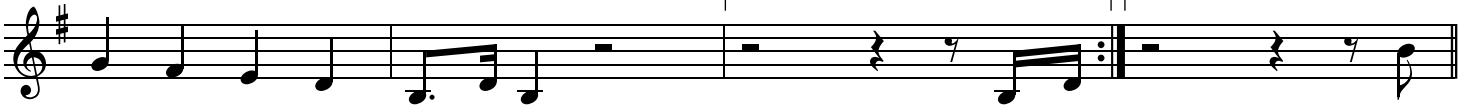
heart may fail, my song will rise, — my song will rise — to You. While there's breath in — my lungs  
wa - ters rise, I'll lift my eyes, — I'll lift my eyes — to You. While there's hope in — this heart

6

G

1.

2.



I will praise You, Lord. —  
I will praise You, Lord. —

2. In the The

## CHORUS

10

G

Em<sup>7</sup>



joy of — the Lord is — my strength!

The joy of — the Lord is — my

13

D

C<sup>2</sup>



strength!

In the dark - ness — I'll dance, in the shad - ows — I'll sing, the

VERSE 3

16 G G

joy of \_ the Lord is \_ my strength! 3. When I can-not see You with my eyes, \_ let

19

faith a - rise \_ to You. When I can-not feel Your hand in mine, \_ let faith a - rise \_ to You. God of

22 C<sup>2</sup> G

mer - cy \_ and love, I will praise You, Lord. \_ 4. Oh, You

VERSE 4

26 G

shine with glo - ry, Lord of light; \_ I feel a - live \_ with You. In Your

28 C<sup>2</sup>

pres-ence now, I come a - live; \_ I am a - live \_ with You. There is strength when \_ I say:

CHORUS

31 G G

"I will praise You, Lord!" \_\_\_\_\_ The joy of \_ the Lord is \_ my

35

Em<sup>7</sup>



strength! The joy of the Lord is my strength! In the

Last time to Coda ⊕

38

D

C<sup>2</sup>

G



dark - ness I'll dance, in the shad - ows I'll sing, the joy of the Lord is my

41

1, 3.

2.

INSTRUMENTAL

C

D

Em<sup>7</sup>

D/F#



strength! The strength!

BRIDGE

45

C

D

Em<sup>7</sup>

D/F#

C

D



When sor - row comes my way, You

48

Em<sup>7</sup>

D/F#

C

D

Em<sup>7</sup>

D/F#



are the shield a - round me. Al - ways, You re - main, like cour - age in the fight. I

51

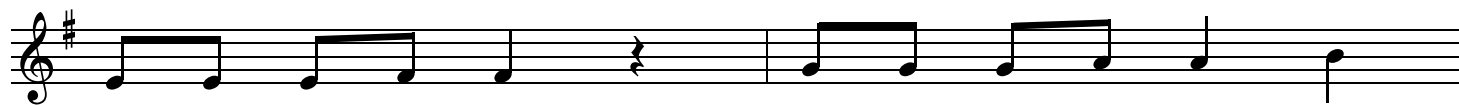
C

D

Em<sup>7</sup>

D/F#

G



hear You call my name. Je - sus, I am com - ing,

53

C

D

G

D

D.S. al Coda



walk - ing on the waves, reach - ing for Your light! The

56      ⊕ Coda  
          G

The musical notation is on a single staff in treble clef with a key signature of one sharp (F#). It begins with a quarter note on G4, followed by a quarter rest, then a quarter note on G4 with a fermata above it, and finally a quarter rest. The piece concludes with a double bar line.

strength!