

# You Never Let Go

Words and Music by  
Matt Redman and Beth Redman

♩=76

VERSE

G



1. E-ven though I walk through the val - ley of the shad - ow — of death, Your  
(2.) light that is com - ing for the heart — that holds on, a

3 C<sup>2</sup>/E



per - fect love is cast - ing out fear, and e - ven when I'm  
glo - rious light be - yond all com - pare, and there will be an

5 G

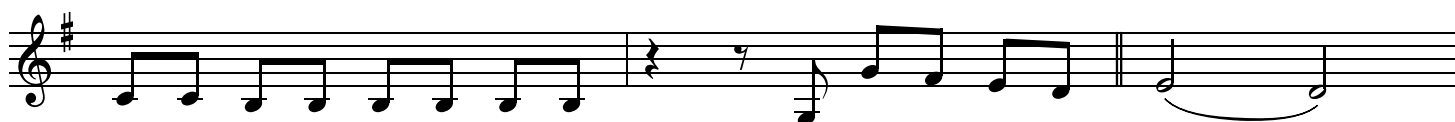


caught in the mid - dle of the storms of this life, I  
end to these trou - bles, but un - til that day comes, we'll

PRE-CHORUS

Em<sup>7</sup> D

7 C<sup>2</sup>/E



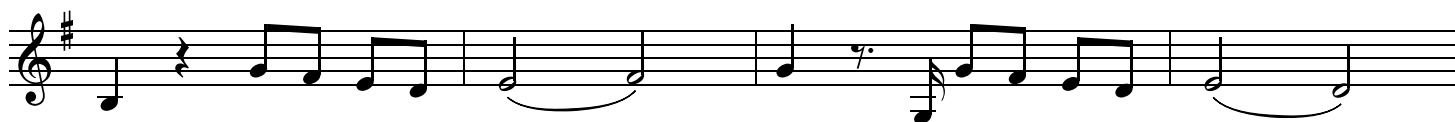
won't turn back, I know You are near. And I will fear no e -  
live to know You here on the earth.

10 G

Em<sup>7</sup> D

G

Em<sup>7</sup> D

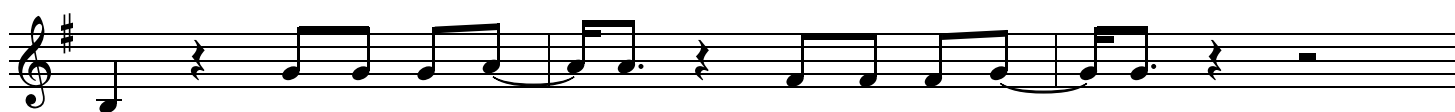


-vil, for my God is with \_\_\_\_\_ me, and if my God is with \_\_\_\_\_

14 G

D

C<sup>2</sup>



me, whom then shall I \_\_\_\_\_ fear? Whom then shall I \_\_\_\_\_ fear?

**CHORUS**

17 G

Oh no, You nev - er let go, through the calm and through the storm. \_

19 Em<sup>7</sup> D<sup>sus</sup> Last time to Coda ⊕

Oh no, You nev-er let go in ev - 'ry high and ev - 'ry low. \_ Oh no, You nev-er let go,

22 1. C<sup>2</sup> G D<sup>sus</sup> C<sup>2</sup>

Lord, You nev-er let go of \_ me. \_ 2. And I can see a

25 2. C<sup>2</sup>

Lord, You nev - er let go of \_\_\_\_\_ me. \_\_\_\_\_ You

26 G D<sup>sus</sup> C<sup>2</sup> D.S. al Coda

keep on run - nin' and You nev - er let go. \_\_\_\_\_ Sing - in'

28 ⊕ Coda C<sup>2</sup> G D<sup>sus</sup> C<sup>2</sup>

Lord, You nev-er let go of \_ me. \_ Yes, I can see a

**BRIDGE**

31 G

light that is com - ing for the heart that holds on, and there will be an

33 **Em<sup>7</sup>** **D<sup>sus</sup>**

end to these trou-bles, but un - til that day comes, still I will praise You,

36 **C<sup>2</sup>** **G** 1. **D<sup>sus</sup>** **C<sup>2</sup>** 2. **D<sup>sus</sup>** **C<sup>2</sup>**

still I will praise You. — Yes, I can see a

**CHORUS**

40 **G**

Oh no, You nev - er let go, through the calm and through the storm. —

42 **Em<sup>7</sup>** **D<sup>sus</sup>**

Oh no, You nev-er let go, in ev - 'ry high and ev - 'ry low. — Oh no, You nev-er let go,

45 **C<sup>2</sup>** **G** **D<sup>sus</sup>** **C<sup>2</sup>**

Lord, You nev-er let go of — me. —

**CHORUS**

48 **G**

Oh no, You nev - er let go, through the calm and through the — storm. —

50 **Em<sup>7</sup>** **D<sup>sus</sup>**

Oh no, You nev-er let go, in ev - 'ry high and ev - 'ry — low. — Oh no, You nev-er let go,

ENDING

53 C<sup>2</sup> G

Lord, You nev - er let go of \_\_\_\_ me. \_\_\_\_\_

55 D<sup>sus</sup> C<sup>2</sup> G

Lord, You nev - er let go of \_\_\_\_ me. \_\_\_\_\_